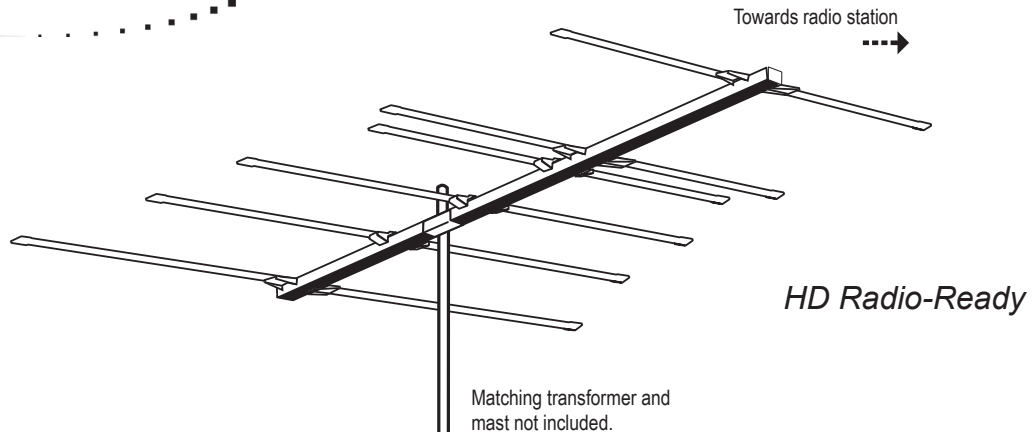


**WARNING:** Installation of this product near powerlines is **DANGEROUS**. For your safety, follow the installation directions.



## FM6

### FM ANTENNA

#### BEFORE YOU BEGIN

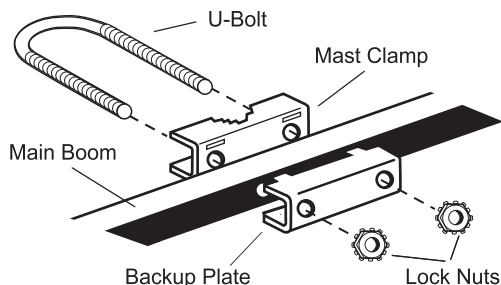
Read this manual and Consumer Product Safety Commission information. For your safety and convenience, plan each step of the installation and purchase the necessary hardware in advance. The order in which you perform the steps and the hardware required depends on the mounting and connection methods you choose.

We recommend two people assemble the entire antenna on the ground, then mount the assembled antenna on the mast.

**Warning:** When you install your antenna, use extreme caution. If the antenna starts to fall, let it go! It could contact overhead power lines. If the antenna touches the power line, contact with the antenna, mast, cable, or guy wires can cause electrocution and death. Call the power company to remove the antenna. **Do not attempt to remove it yourself.**

#### ASSEMBLING THE ANTENNA

1. Use the supplied hardware to loosely attach the supplied mast clamp assembly to the main boom as shown.

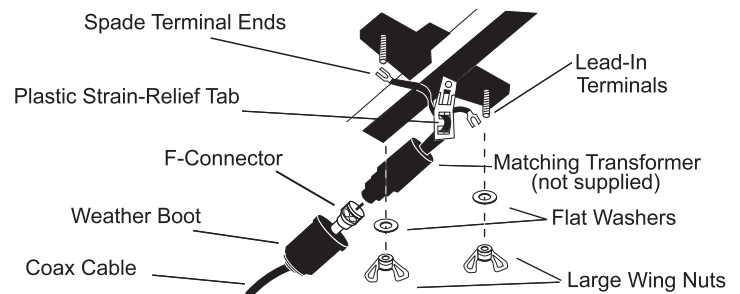


2. Press the supplied large end plugs into the main boom.

#### CONNECTING LEAD-IN CABLE TO THE ANTENNA

We recommend RG-6 cable, and if you prepare your own cable, a quality F-connector. Note: If you prepare your own cable, slide a (not supplied) matching transformer's weather boot onto the cable before you attach the F-connector.

1. Thread the (not supplied) matching transformer's spade terminal ends through the antenna's strain-relief tab.
2. Slide the spade terminal ends around the antenna's lead-in terminals marked **CONNECT LEAD-IN HERE**. Secure them with the supplied flat washers and large wing nuts.
3. Screw the cable's F-connector onto the (not supplied) matching transformer. Then slip the weatherboot over the connection. **Note:** If you use a cable without a weatherboot, cover the connection with weatherproof tape.



#### UNFOLDING THE ANTENNA ELEMENTS

Hold the main boom's elements near the pivot points and pull them away from the boom until they snap into the locking insulators.

**Note:** You may wait to unfold the elements until you get the antenna up on the roof.

**Caution:** Do not pull the elements near their outer ends or you could damage them. Once the elements are locked into position, do not attempt to unlock them.

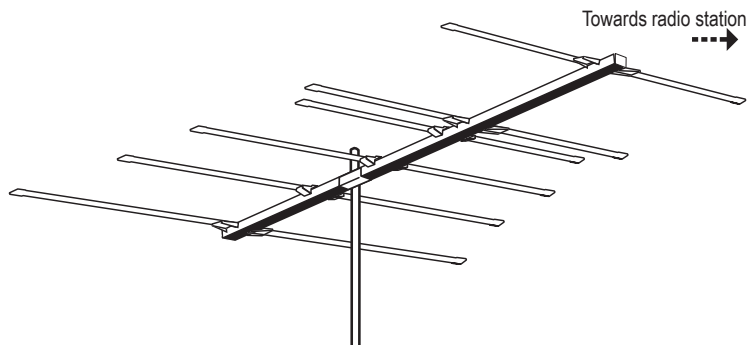
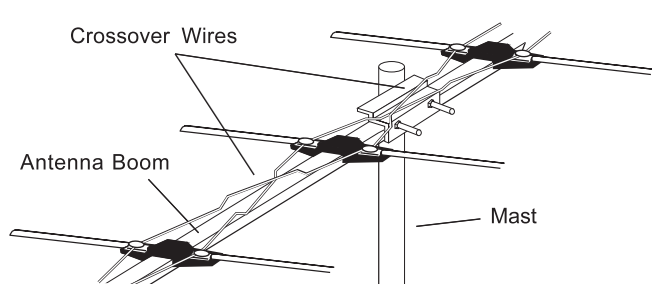
## ATTACHING TO THE MAST

We recommend you get the help of another person before you put up the mast or attach your antenna to it. How you set up your mast depends on your specific installation. Refer to the separate Consumer Product Safety Commission information for recommended methods.

1. Slide the antenna's mast clamp assembly over the end of the mast.
2. Tighten the mast clamp assembly's lock nuts to hold the antenna in place. Do not overtighten the lock nuts.

**Caution:** The crossover wires must not touch the antenna boom, the mast, or each other. If necessary, carefully bend the crossover wires to provide at least 1/2 inch of clearance.

3. Set up the mast, then rotate it so the antenna's shortest elements point toward the stations you want to receive.



## ROUTING THE CABLE TO YOUR FM RECEIVER

- ▶ Use plastic tape to secure the coaxial cable to the mast at about 3-foot intervals.
- ▶ Use coaxial nail clips every few feet to secure the cable between the mast and where the cable enters the house.
- ▶ Use a 75-ohm grounding block at the point where the coaxial cable enters the house. Read the Consumer Product Safety Commission information for grounding instructions.
- ▶ Use a drip-loop before the cable enters the house.
- ▶ Use a wall-through tube to neatly route the coaxial cable through the walls.

### Limited Warranty

This product is warranted by Antennacraft against manufacturing defects in material and workmanship under normal use for ninety (90) days from the date of purchase from Antennacraft dealers.

EXCEPT AS PROVIDED HEREIN, ANTENNA-CRAFT MAKES NO EXPRESS WARRANTIES AND ANY IMPLIED WARRANTIES, INCLUDING THOSE OF MERCHANTABILITY AND FITNESS FOR A PARTICULAR PURPOSE, ARE LIMITED IN DURATION TO THE DURATION OF THE WRITTEN LIMITED WARRANTIES CONTAINED HEREIN. EXCEPT AS PROVIDED HEREIN, ANTENNA-CRAFT SHALL HAVE NO LIABILITY OR RESPONSIBILITY TO CUSTOMER OR ANY OTHER PERSON OR ENTITY WITH RESPECT TO ANY LIABILITY, LOSS OR DAMAGE CAUSED DIRECTLY OR INDIRECTLY BY USE OR PERFORMANCE OF THE PRODUCT OR ARISING OUT OF ANY BREACH OF THIS WARRANTY, INCLUDING, BUT NOT LIMITED TO, ANY DAMAGES RESULTING FROM INCONVENIENCE, LOSS OF TIME, DATA, PROPERTY, REVENUE, OR PROFIT OR ANY INDIRECT, SPECIAL, INCIDENTAL, OR CONSEQUENTIAL DAMAGES, EVEN IF ANTENNA-CRAFT HAS BEEN ADVISED OF THE POSSIBILITY OF SUCH DAMAGES.

Some states do not allow limitations on how long an implied warranty lasts or the exclusion or limitation of incidental or consequential damages, so the above limitations or exclusions may not apply to you.

In the event of a product defect during the warranty period, take the product and the sales receipt as proof of the purchase date to any ANTENNA-CRAFT dealer. ANTENNA-CRAFT will, at its option, unless otherwise provided by law: (a) correct the defect by product repair without charge for parts and labor (b) replace the product with one of the same or similar design; or (c) refund the purchase price. All replaced parts and products, and products on which a refund is made, become the property of ANTENNA-CRAFT. New or reconditioned parts and products may be used in the performance of warranty service. Repaired or replaced parts and products are warranted for the remainder of the original warranty period. You will be charged for repair or replacement of the product made after the expiration of the warranty period.

This warranty does not cover: (a) damage or failure caused by or attributable to acts of God, abuse, accident, misuse, improper or abnormal usage, failure to follow instructions, improper installation or maintenance, alteration, lightning or other incidence of excess voltage or current; (b) any repairs other than those provided by an ANTENNA-CRAFT authorized service facility; (c) consumables such as fuses or batteries; (d) cosmetic damage; (e) transportation, shipping or insurance costs; or (f) costs of product removal, installation, set-up service adjustment or reinstallation. This warranty gives you specific legal rights, and you may also have other rights which vary from state to state.

ANTENNA-CRAFT, PO Box 1005, Burlington, IA 52601, 319-758-8050 [www.antennacraft.net](http://www.antennacraft.net) 7/09  
Product may vary from depiction. Mast not included and matching transformer not included. FM6 1500284